

Scales & Arpeggios from Memory

For the examination, the candidate should be asked to perform all the following scales and arpeggios from memory. They should perform each scale and arpeggio either tongued or slurred as requested by the teacher. The teacher should aim for an even distribution of articulations. All tempi given are

minimum speeds.

♩ = 72

G major scale - 2 octaves



Bb major scale - 2 octaves



Eb major scale - 2 octaves



E harmonic minor scale (only 1 version harmonic or melodic required)

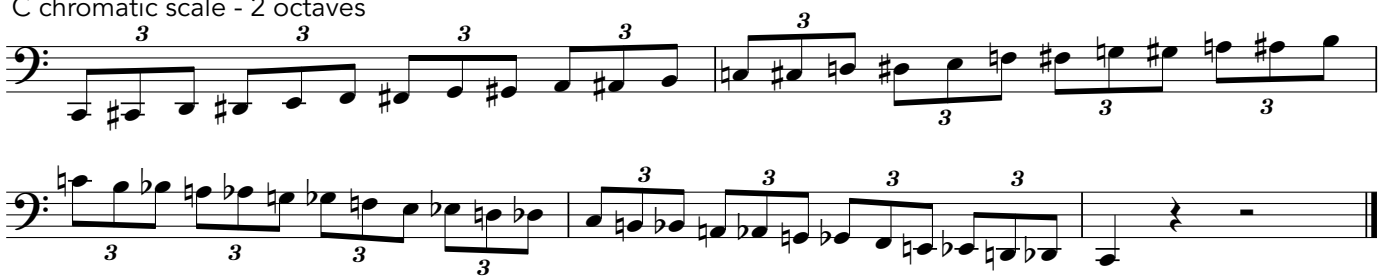


E melodic minor scale



♩ = 48

C chromatic scale - 2 octaves



♩ = 50

Dominant 7th in C - two octaves



♩ = 100

G major arpeggio



Bb major arpeggio



Eb major arpeggio



E minor arpeggio

