



# Grade 3

Exercise 1 (for tone and breath control) ♩=c66

(Lip slurs to be performed on either F or Bb Horn)

Exercise 2 - Lip slurs (F Horn) on open harmonics ♩=c82

Exercise 2 - Lip slurs (Bb Horn) on open harmonics ♩=c82

Exercise 3 - (for rhythm and articulation) ♩=c90

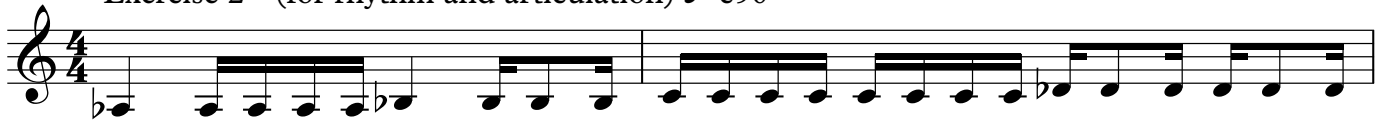
Exercise 4 - (for pitching) ♩=c90

## Grade 4

Exercise 1 (for tone) ♩=c60



Exercise 2 - (for rhythm and articulation) ♩=c90

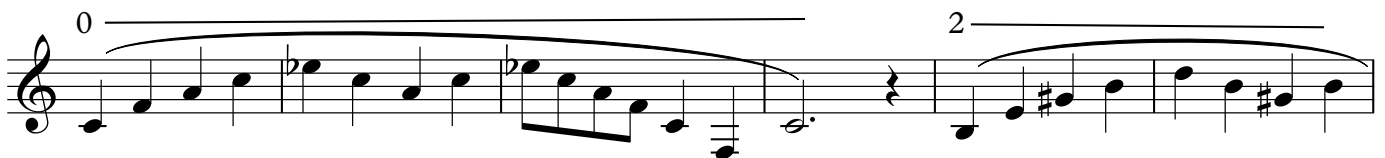


(Lip slurs to be performed on either F or Bb Horn)

Exercise 3 - Lip slurs (F Horn) ♩=c116



Exercise 3 - Lip slurs (Bb Horn) ♩=c116



Exercise 4 - (for chromatics fingering) ♩=80+



# Grade 5

(Lip slurs to be performed on either F or Bb Horn)

## Exercise 1 - Lip slurs (F Horn) ♩=c108



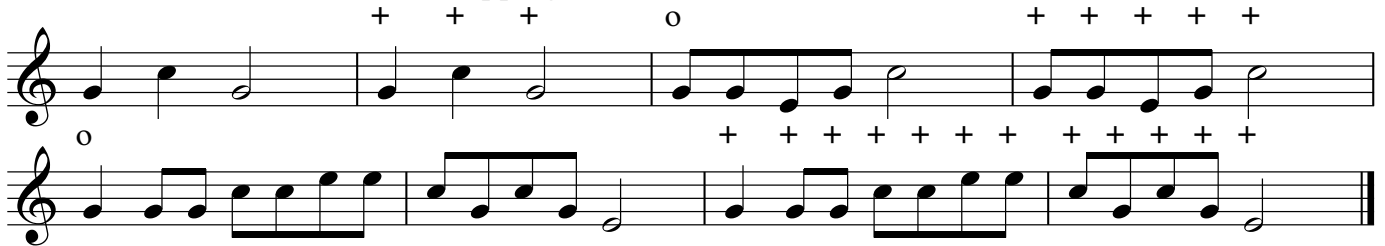
Musical score for Exercise 1 (F Horn) lip slurs. It consists of four staves of music in treble clef with a key signature of one sharp (F#). The tempo is marked as ♩=c108. The first two staves feature lip slurs with fingerings 0 and 2, and 1 and 2 respectively. The third and fourth staves continue the exercise with various fingerings (2, 3, 1, 2, 3) and include triplet markings (3) under groups of notes.

## Exercise 1 - Lip slurs (Bb Horn) ♩=c108



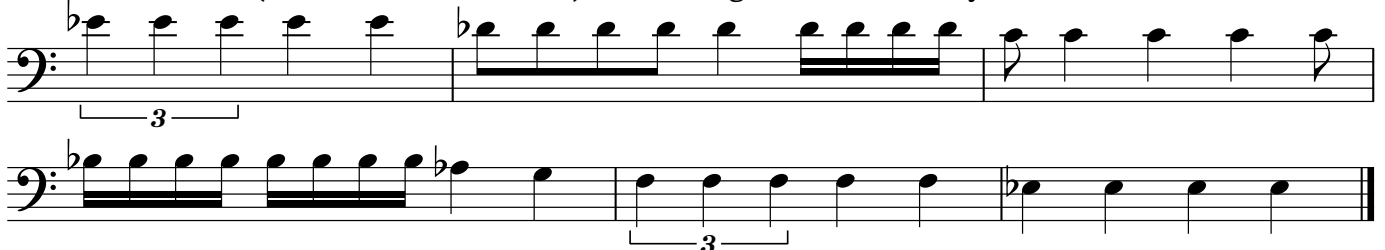
Musical score for Exercise 1 (Bb Horn) lip slurs. It consists of four staves of music in treble clef with a key signature of two flats (Bb). The tempo is marked as ♩=c108. The first two staves feature lip slurs with fingerings 0 and 2, and 1 and 1 respectively. The third and fourth staves continue the exercise with various fingerings (2, 3, 1, 2, 3) and include triplet markings (3) under groups of notes.

## Exercise 2 - ♩=c90 (hand stopping)



Musical score for Exercise 2 (hand stopping). It consists of two staves of music in treble clef with a key signature of one sharp (F#). The tempo is marked as ♩=c90. The first staff has plus signs (+) above notes, and the second staff has plus signs (+) below notes, indicating hand stopping exercises.

## Exercise 3 - (New/modern notation) for reading bass clef and rhythm ♩=c96



Musical score for Exercise 3 (bass clef and rhythm). It consists of two staves of music in bass clef with a key signature of one flat (Bb). The tempo is marked as ♩=c96. The first staff includes a triplet marking (3) under a group of notes. The second staff includes a triplet marking (3) under a group of notes.