

MTB Exams Scales

Trumpet, Cornet, Baritone & Euphonium

Grade 1

For the examination perform *all* the following scales and arpeggios from memory.
Play each scale and arpeggio *either* tongued *or* slurred (as requested by the examiner).

Scales ♩ = 50 Arpeggios triplet ♩ = 72

C major scale



A minor harmonic scale (only 1 version harmonic or melodic required)



A minor melodic scale



C major arpeggio



A minor arpeggio



MTB Exams Scales

Trumpet, Cornet, Baritone & Euphonium

Grade 2

For the examination perform all the following scales and arpeggios from memory.
Play each scale and arpeggio either tongued or slurred (as requested by the examiner).

Scales ♩=56 Arpeggios triplet ♩=80

Bb major scale



D major scale



C harmonic minor scale (only 1 version harmonic or melodic required)



C melodic minor scale



Bb major arpeggio



D major arpeggio



C minor arpeggio



MTB Exams Scales

Trumpet, Cornet, Baritone & Euphonium

Grade 3

For the examination perform *all* the following scales and arpeggios from memory.
Play each scale and arpeggio *either* tongued *or* slurred (as requested by the examiner).

Scales ♩=66 Arpeggios triplet ♩=92

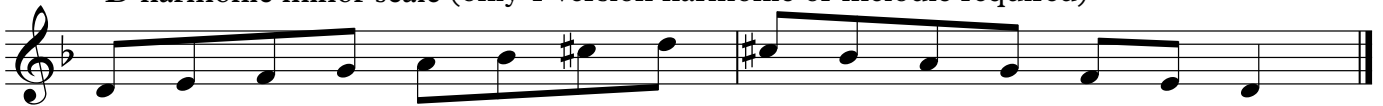
A major scale



E major scale



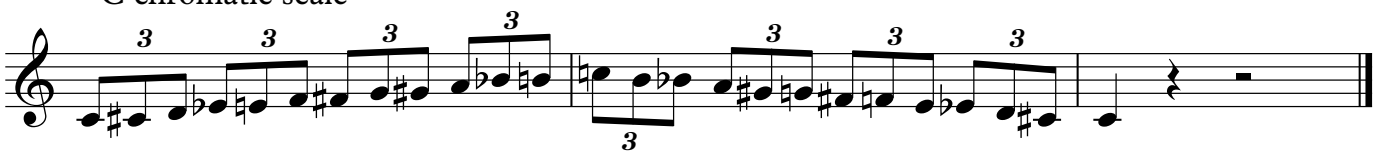
D harmonic minor scale (only 1 version harmonic or melodic required)



D melodic minor scale



C chromatic scale



A major arpeggio



E major arpeggio



D minor arpeggio



MTB Exams Scales

Trumpet, Cornet, Baritone & Euphonium

Grade 4

For the examination perform *all* the following scales and arpeggios from memory.
Play each scale and arpeggio *either* tongued *or* slurred (as requested by the examiner).

Scales ♩=72 Arpeggios triplet ♩=100

E♭ major scale



F major scale



C# melodic minor scale



E harmonic minor scale



E♭ major arpeggio



F major arpeggio



C# minor arpeggio



E minor arpeggio



MTB Exams Scales

Trumpet, Cornet, Baritone & Euphonium

Grade 5

For the examination perform *all* the following scales and arpeggios from memory
Play each scale and arpeggio *either* tongued *or* slurred (as requested by the examiner)

Scales ♩=80 Arpeggios triplet ♩=112

G major scale - 2 octaves



B major scale - 1 octave



G harmonic minor scale - 2 octaves



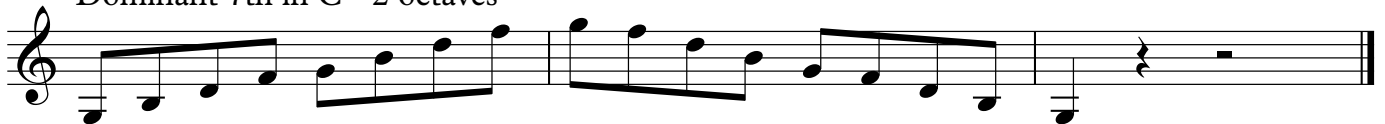
F melodic minor scale - 1 octave



G chromatic scale - 2 octaves



Dominant 7th in C - 2 octaves



G major arpeggio - 2 octaves



B major arpeggio - 1 octave



G minor arpeggio - 2 octaves



F minor arpeggio - 1 octave



MTB Exams Scales

Trumpet, Cornet, Baritone & Euphonium

Grade 6

For the examination perform *all* the following scales and arpeggios from memory
Play each scale and arpeggio *either* tongued *or* slurred (as requested by the examiner)

Scales ♩=96 Arpeggios ♩=56

A \flat major scale - 2 octaves



A major scale - 2 octaves



B \flat harmonic minor scale - 2 octaves



F# melodic minor scale - 2 octaves



A whole tone scale - 2 octaves



Dominant 7th in D - 2 octaves



Diminished 7th on G - 2 octaves



A \flat major arpeggio - 2 octaves



A major arpeggio - 2 octaves



B \flat minor arpeggio - 2 octaves



F# minor arpeggio - 2 octaves



MTB Exams Scales

Trumpet, Cornet, Baritone & Euphonium

Grade 7

For the examination perform *all* the following scales and arpeggios from memory
Play each scale and arpeggio *either* tongued *or* slurred (as requested by the examiner)

Scales ♩=108 Arpeggios ♩-66

Bb major scale - 2 octaves

Db major scale - 12th

E major scale - 12th

B melodic minor scale - 2 octaves

D harmonic minor scale - 12th

Eb harmonic minor scale - 12th

Dominant 7th in Eb - 2 octaves

Diminished 7th on Ab - 2 octaves

G chromatic scale - 2 octaves

Bb major arpeggio - 2 octaves

E major arpeggio - 12th

D minor arpeggio - 12th

Bb major arpeggio - 12th

Db major arpeggio - 12th

B minor arpeggio - 2 octaves

Eb minor arpeggio - 12th

MTB Exams Scales

Trumpet, Cornet, Baritone & Euphonium

Grade 8

For the examination perform *all* the following scales and arpeggios from memory
Play each scale and arpeggio *either* tongued *or* slurred (as requested by the examiner)

Scales ♩=120 Arpeggios ♩=76

F# major scale - 2 octaves



B major scale - 2 octaves



Eb major scale - 12th



G# harmonic minor scale - 2 octaves



A harmonic minor scale - 2 octaves



A melodic minor scale - 2 octaves



C melodic minor scale - 2 octaves



Dominant 7th in E - 2 octaves



Diminished 7th on A - 2 octaves



Bb whole tone scale - 2 octaves



F# major arpeggio - 2 octaves



B major arpeggio - 2 octaves



D major arpeggio - 2 octaves



Eb major arpeggio - 12th



G# minor arpeggio - 2 octaves



C minor arpeggio - 2 octaves

