

# MTB Exams Scales

## *E♭ Tenor Horn*

### *Grade 1*

For the examination perform *all* the following scales and arpeggios from memory.  
Play each scale and arpeggio *either* tongued *or* slurred (as requested by the examiner).

Scales ♩ = 50      Arpeggios triplet ♩ = 72

C major scale



A minor harmonic scale (only 1 version harmonic or melodic required)



A minor melodic scale



C major arpeggio



A minor arpeggio



# MTB Exams Scales

## *E♭ Tenor Horn*

### *Grade 2*

For the examination perform *all* the following scales and arpeggios from memory.  
Play each scale and arpeggio *either* tongued *or* slurred (as requested by the examiner)

Scales ♩=56 Arpeggios triplet ♩=80

B♭ major scale



D major scale



C harmonic minor scale (only 1 version harmonic or melodic required)



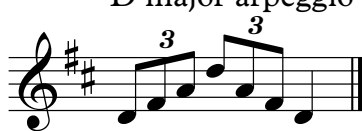
C melodic minor scale



B♭ major arpeggio



D major arpeggio



C minor arpeggio



# MTB Exams Scales

## *E♭ Tenor Horn*

### *Grade 3*

For the examination perform *all* the following scales and arpeggios from memory.  
Play each scale and arpeggio *either* tongued *or* slurred (as requested by the examiner).

Scales ♩=66 Arpeggios triplet ♩=92

A major scale



E major scale



D harmonic minor scale (only 1 version harmonic or melodic required)



D melodic minor scale



C chromatic scale



A major arpeggio



E major arpeggio



D minor arpeggio



# MTB Exams Scales

## *E♭ Tenor Horn*

### *Grade 4*

For the examination perform *all* the following scales and arpeggios from memory.  
Play each scale and arpeggio *either* tongued *or* slurred (as requested by the examiner).

Scales ♩=72 Arpeggios triplet ♩=100

E♭ major scale



F major scale



C# melodic minor scale



E harmonic minor scale



E♭ major arpeggio



F major arpeggio



C# minor arpeggio



E minor arpeggio



# MTB Exams Scales

## *E♭ Tenor Horn*

### *Grade 5*

For the examination perform *all* the following scales and arpeggios from memory  
Play each scale and arpeggio *either* tongued *or* slurred (as requested by the examiner)

Scales ♩=80 Arpeggios triplet ♩=112

G major scale - 2 octaves



B major scale - 1 octave



G harmonic minor scale - 2 octaves



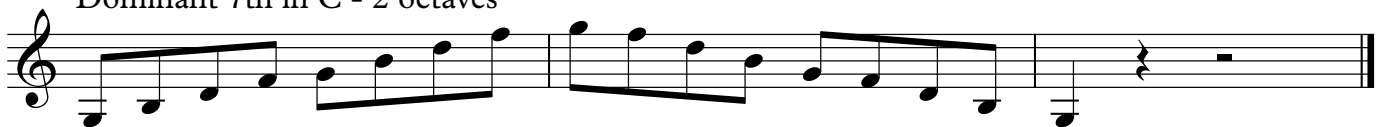
F melodic minor scale - 1 octave



G chromatic scale - 2 octaves



Dominant 7th in C - 2 octaves



G major arpeggio - 2 octaves



B major arpeggio - 1 octave



G minor arpeggio - 2 octaves



F minor arpeggio - 1 octave



# MTB Exams Scales

## *E♭ Tenor Horn*

### *Grade 6*

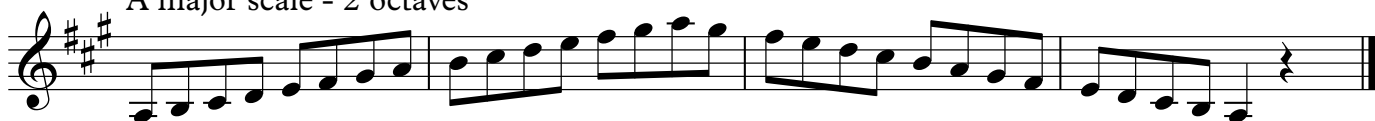
For the examination perform *all* the following scales and arpeggios from memory  
Play each scale and arpeggio *either* tongued *or* slurred (as requested by the examiner)

Scales ♩=96 Arpeggios ♩=56

A♭ major scale - 2 octaves



A major scale - 2 octaves



B♭ harmonic minor scale - 2 octaves



F♯ melodic minor scale - 2 octaves



A whole tone scale - 2 octaves



Dominant 7th in D - 2 octaves



Diminished 7th on G - 2 octaves



A♭ major arpeggio - 2 octaves



A major arpeggio - 2 octaves



B♭ minor arpeggio - 2 octaves



F♯ minor arpeggio - 2 octaves



# MTB Exams Scales

## *E♭ Tenor Horn*

### *Grade 7*

For the examination perform *all* the following scales and arpeggios from memory  
Play each scale and arpeggio *either* tongued *or* slurred (as requested by the examiner)

Scales ♩=108 Arpeggios ♩-66

B♭ major scale - 2 octaves



D♭ major scale - 12th



E major scale - 12th



B melodic minor scale - 2 octaves



D harmonic minor scale - 12th



E♭ harmonic minor scale - 12th



Dominant 7th in E♭ - 2 octaves



Diminished 7th on A♭ - 2 octaves



G chromatic scale - 2 octaves



B♭ major arpeggio - 2 octaves



D♭ major arpeggio - 12th



E major arpeggio - 12th



B minor arpeggio - 2 octaves



D minor arpeggio - 12th



E♭ minor arpeggio - 12th



# MTB Exams Scales

## *E♭ Tenor Horn*

### *Grade 8*

For the examination perform *all* the following scales and arpeggios from memory  
Play each scale and arpeggio *either* tongued *or* slurred (as requested by the examiner)

Scales ♩=120 Arpeggios ♩=76

F# major scale - 2 octaves



B major scale - 2 octaves



E♭ major scale - 12th



G# harmonic minor scale - 2 octaves



A harmonic minor scale - 2 octaves



A melodic minor scale - 2 octaves



C melodic minor scale - 2 octaves



Dominant 7th in E - 2 octaves



Diminished 7th on A - 2 octaves



B♭ whole tone scale - 2 octaves



F# major arpeggio - 2 octaves



B major arpeggio - 2 octaves



D major arpeggio - 2 octaves



E♭ major arpeggio - 12th



G# minor arpeggio - 2 octaves



C minor arpeggio - 2 octaves

