

MTB Bassoon Technical Exercises

Grade 1

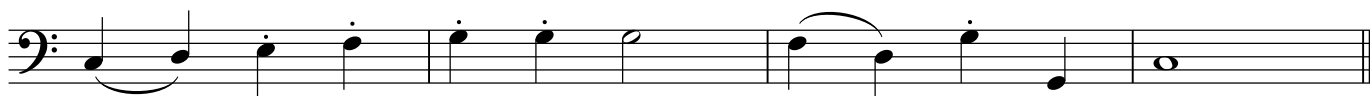
Tone (to be played with a full tone)



Fingering



Articulation



Tone (to be played with a full tone) Grade 2



Fingering



Articulation



Tone

Grade 3

First line of the Grade 3 Tone exercise in bass clef. It features a sequence of notes with dynamic markings *f*, *f*, *p*, and *f*. The notes are: G2 (half note), A2 (half note), B2 (quarter note), C3 (quarter note), D3 (quarter note), E3 (quarter note), F3 (quarter note), G3 (quarter note), A3 (quarter note), B3 (quarter note), C4 (half note).

Second line of the Grade 3 Tone exercise in bass clef. It continues the sequence with dynamic markings *f*, *f*, and *p*. The notes are: D3 (half note), E3 (half note), F3 (quarter note), G3 (quarter note), A3 (quarter note), B3 (quarter note), C4 (quarter note), D4 (quarter note), E4 (quarter note), F4 (quarter note), G4 (half note).

Fingering

First line of the Grade 3 Fingering exercise in bass clef. It features a sequence of eighth notes with fingerings 1-2-3-4-5-4-3-2-1. The notes are: G2, A2, B2, C3, D3, E3, F3, G3, A3, B3, C4.

Second line of the Grade 3 Fingering exercise in bass clef. It continues the sequence of eighth notes with fingerings 1-2-3-4-5-4-3-2-1. The notes are: D3, E3, F3, G3, A3, B3, C4, D4, E4, F4, G4.

Articulation

First line of the Grade 3 Articulation exercise in bass clef. It features a sequence of eighth notes with accents. The notes are: G2, A2, B2, C3, D3, E3, F3, G3, A3, B3, C4.

Second line of the Grade 3 Articulation exercise in bass clef. It continues the sequence of eighth notes with accents. The notes are: D3, E3, F3, G3, A3, B3, C4, D4, E4, F4, G4. The exercise concludes with a *rall.* marking and a final *f* dynamic.

Tone

cresc.

Grade 4

First line of the Grade 4 Tone exercise in bass clef. It features a sequence of notes with dynamic markings *p*, *f*, *p*, *f*, *p*, *f*, and *f*. The notes are: G2 (half note), A2 (half note), B2 (quarter note), C3 (quarter note), D3 (quarter note), E3 (quarter note), F3 (quarter note), G3 (quarter note), A3 (quarter note), B3 (quarter note), C4 (half note).

Second line of the Grade 4 Tone exercise in bass clef. It continues the sequence with dynamic markings *f* and *p*. The notes are: D3 (half note), E3 (half note), F3 (quarter note), G3 (quarter note), A3 (quarter note), B3 (quarter note), C4 (quarter note), D4 (quarter note), E4 (quarter note), F4 (quarter note), G4 (half note).

Fingering

First line of the Grade 4 Fingering exercise in bass clef. It features a sequence of eighth notes with fingerings 1-2-3-4-5-4-3-2-1. The notes are: G2, A2, B2, C3, D3, E3, F3, G3, A3, B3, C4.

Second line of the Grade 4 Fingering exercise in bass clef. It continues the sequence of eighth notes with fingerings 1-2-3-4-5-4-3-2-1. The notes are: D3, E3, F3, G3, A3, B3, C4, D4, E4, F4, G4.

Articulation

leggiero

Tone

Grade 5

f *mf* *p* *p* *mf* *f* *p* *mf*

f *f* *ff* *pp*

Fingering

Articulation