

MTB Exams

Alternative to scales from memory

Bassoon
Grade 1

The following do not need to be played from memory

For the examination perform *all* the following

Scales ♩ = 50 Arpeggios triplet ♩ = 72

F major scale



F major scale with rhythmic pattern



G major scale



E minor harmonic scale



E minor harmonic scale with rhythmic pattern



F major arpeggio



G major arpeggio



E minor arpeggio



MTB Exams

Alternative to scales from memory

Bassoon

Grade 2

The following do not need to be played from memory

For the examination perform *all* the following
(only 1 version of minors - harmonic or melodic are required)

Scales ♩=56 Arpeggios triplet ♩=80

Bb major scale



Bb major scale with rhythmic pattern



G major scale - 12th



G major scale with rhythmic pattern



C major scale - 2 octaves



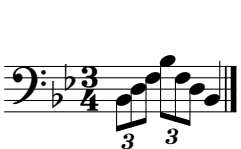
A harmonic minor scale (only 1 version harmonic or melodic required)



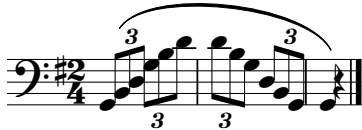
A melodic minor scale



Bb major arpeggio



G major arpeggio - 12th



C major arpeggio - 2 octaves



A minor arpeggio



MTB Exams

Alternative to scales from memory

Bassoon

Grade 3

The following do not need to be played from memory

For the examination perform *all* the following
(only 1 version of minors - harmonic or melodic are required)

Scales ♩=66 Arpeggios triplet ♩=92

A major scale



A major scale with rhythmic pattern



Bb major scale - 12th



Bb major scale with rhythmic pattern



D major scale - 2 octaves



F major scale - 2 octaves



D harmonic minor scale - 2 octaves (only 1 version harmonic or melodic required)



D melodic minor scale - 2 octaves (only 1 version harmonic or melodic required)



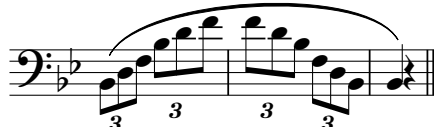
G chromatic scale



A major Arpeggio



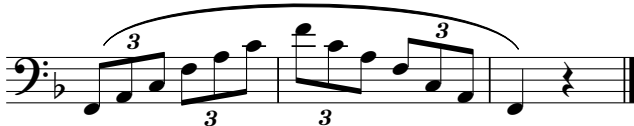
Bb major arpeggio - 12th



D major arpeggio - 2 octaves



F major arpeggio - 2 octaves



D minor arpeggio - 2 octaves



MTB Exams

Alternative to scales from memory

Bassoon

Grade 4

The following do not need to be played from memory
For the examination perform *all* the following

Scales ♩=72 Arpeggios triplet ♩=100

G major scale - 2 octaves



G major scale with rhythmic pattern



Bb major scale - 2 octaves



Eb major scale - 2 octaves



E harmonic minor scale (only 1 version harmonic or melodic required)



E melodic minor scale



C chromatic scale - 2 octaves



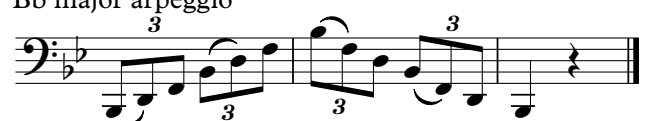
Dominant 7th in C - two octaves



G major arpeggio



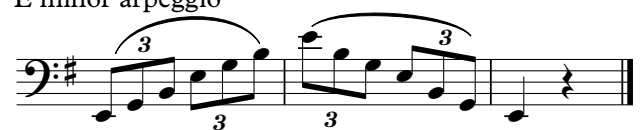
Bb major arpeggio



Eb major arpeggio



E minor arpeggio



MTB Exams
Alternative to scales from memory
Bassoon
Grade 5

The following do not need to be played from memory
For the examination, perform all of the following

Scales ♩=80 Arpeggios ♩=112

Ab major scale - 2 octaves

Musical notation for the Ab major scale in bass clef, 4/4 time, spanning two octaves. The key signature has two flats (Bb and Eb).

E major scale - 2 octaves (swung quavers ♩=♩⁻³⁻)

Musical notation for the E major scale in bass clef, 4/4 time, spanning two octaves. The key signature has three sharps (F#, C#, G#). The rhythm is swung quavers, indicated by a triplet symbol over the first three notes.

E major scale with rhythmic pattern

Musical notation for the E major scale in bass clef, 4/4 time, spanning two octaves. The key signature has three sharps (F#, C#, G#). The rhythm is a specific pattern of eighth and quarter notes.

B harmonic minor scale - 2 octaves

Musical notation for the B harmonic minor scale in bass clef, 4/4 time, spanning two octaves. The key signature has two sharps (F# and C#).

A harmonic minor scale - 2 octaves

Musical notation for the A harmonic minor scale in bass clef, 4/4 time, spanning two octaves. The key signature has no sharps or flats.

G melodic minor scale - 2 octaves (swung quavers ♩=♩⁻³⁻)

Musical notation for the G melodic minor scale in bass clef, 4/4 time, spanning two octaves. The key signature has one flat (Bb). The rhythm is swung quavers, indicated by a triplet symbol over the first three notes.

G chromatic scale - 2 octaves

Musical notation for the G chromatic scale in bass clef, 4/4 time, spanning two octaves. The key signature has one flat (Bb). The scale is played in groups of three notes, indicated by triplet symbols.

Dominant 7th in F - 2 octaves (swung quavers ♩=♩⁻³⁻)

Musical notation for the dominant 7th scale in F in bass clef, 4/4 time, spanning two octaves. The key signature has two flats (Bb and Eb). The rhythm is swung quavers, indicated by a triplet symbol over the first three notes.

Ab major arpeggio - 2 octaves

Musical notation for the Ab major arpeggio in bass clef, 2/4 time, spanning two octaves. The key signature has two flats (Bb and Eb). The arpeggio is played in groups of three notes, indicated by triplet symbols.

E major arpeggio - 2 octaves

Musical notation for the E major arpeggio in bass clef, 2/4 time, spanning two octaves. The key signature has three sharps (F#, C#, G#). The arpeggio is played in groups of three notes, indicated by triplet symbols.

B minor arpeggio - 2 octaves

Musical notation for the B minor arpeggio in bass clef, 2/4 time, spanning two octaves. The key signature has two sharps (F# and C#). The arpeggio is played in groups of three notes, indicated by triplet symbols.

G minor arpeggio - 2 octaves

Musical notation for the G minor arpeggio in bass clef, 2/4 time, spanning two octaves. The key signature has one flat (Bb). The arpeggio is played in groups of three notes, indicated by triplet symbols.

A minor arpeggio - 2 octaves

Musical notation for the A minor arpeggio in bass clef, 2/4 time, spanning two octaves. The key signature has no sharps or flats. The arpeggio is played in groups of three notes, indicated by triplet symbols.